



**RESIDENCE 1AR**

Approx. 2,371 Sq. Ft.

Single-Story

3 Bedrooms Plus Den

Optional Bedroom 4 at Den

2 Baths

Optional Powder or Bath 3 at Pantry and Storage

Optional Covered Outdoor Room

2-Car Garage



*Preliminary*

Brookfield Residential reserves the right, in its sole discretion, to change sales price and add, delete or modify floor plans, elevations, maps, specifications, features, options, materials, design, colors and incentives without notice or obligation. Square footages may vary. Window sizes and location and front entry porch/wall configurations vary based upon exterior elevations. Stated dimensions are approximate estimates and not intended for space planning purposes. Optional features are subject to construction cut-off dates. All maps, plans, landscaping and elevation renderings are an artist's conception and are not to scale. See sales counselor for details. Equal opportunity housing. CalBRE License #01896289. 5/2017

**Brookfield Residential**



# RESIDENCE 3C

Approx. 2,937 Sq. Ft.

Two-Story

4 Bedrooms Plus Bonus Room

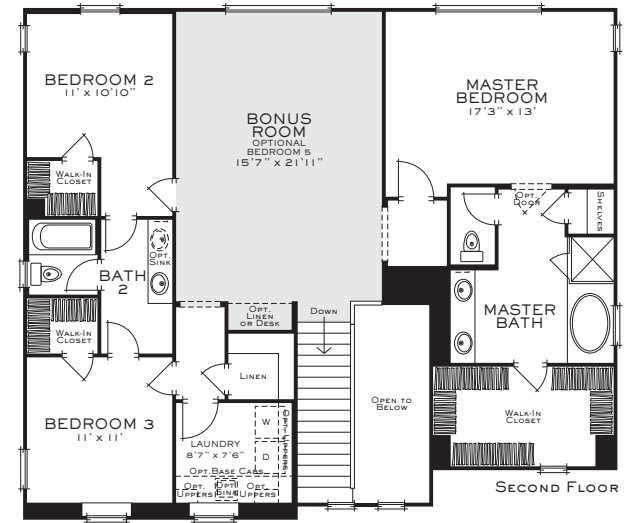
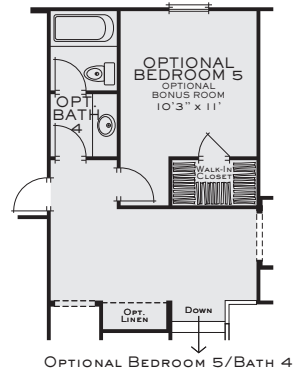
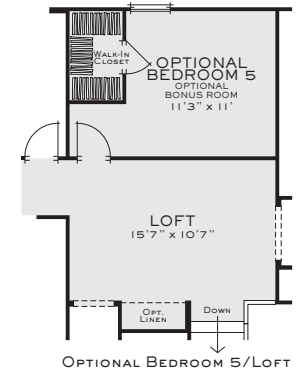
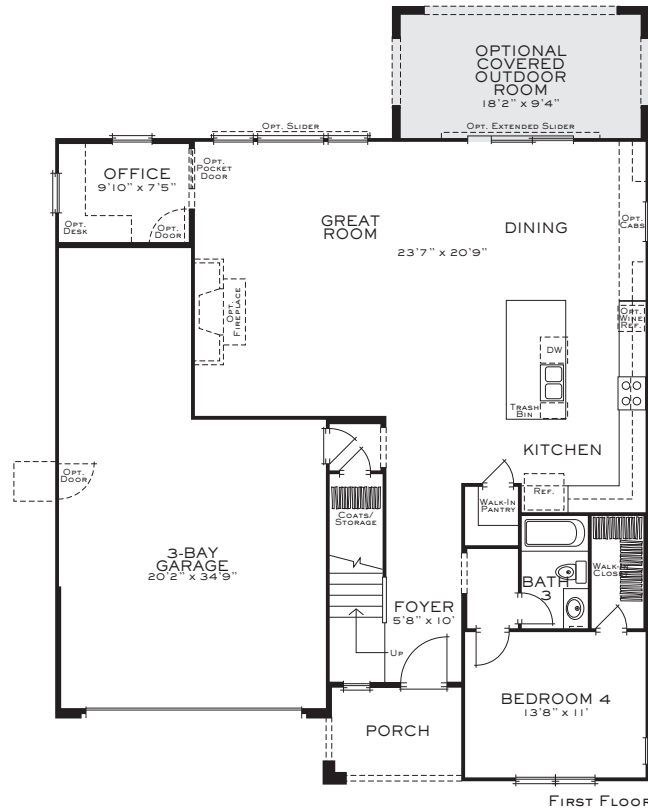
Optional Bedroom 5 Plus Loft  
or Optional Bedroom 5 Plus Bath 4  
at Bonus Room

3 Baths

Office

Optional Covered Outdoor Room

3-Bay Garage



Preliminary

Brookfield Residential reserves the right, in its sole discretion, to change sales price and add, delete or modify floor plans, elevations, maps, specifications, features, options, materials, design, colors and incentives without notice or obligation. Square footages may vary. Window sizes and location and front entry porch/wall configurations vary based upon exterior elevations. Stated dimensions are approximate estimates and not intended for space planning purposes. Optional features are subject to construction cut-off dates. All maps, plans, landscaping and elevation renderings are an artist's conception and are not to scale. See sales counselor for details. Equal opportunity housing. CalBRE License #01896289. 5/2017

**Brookfield Residential**

