

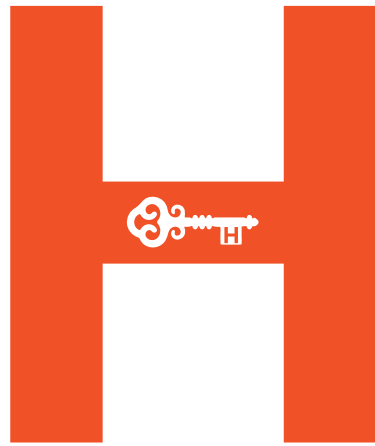


HUNTLEY

AT GREENWOOD







HUNTLEY

AT GREENWOOD

ELEGANT NEW HOMES
DESIGNED FOR THE
LIFE YOU WANT.

Experience the beauty of thoughtful new home design and superb craftsmanship in the heart of Orange County. The vibrant surroundings of Huntley at Greenwood in Tustin Legacy include private resort-style recreation at The Legacy Club, public amenities at Greenwood Park and scenic trails that lead to greenery and open space. Welcome home.

We've been expecting you.



1R

RESIDENCE 1R

Approx. 2,597 – 2,615 Sq. Ft. • 4 Bedrooms • 3 Bathrooms
First Floor Bedroom • Private Courtyard Entry
Expansive Great Room • Upstairs Family Room • Launch
2-Car Garage • Optional Outdoor Room with Kitchen,
Entertainment Center or Fireplace



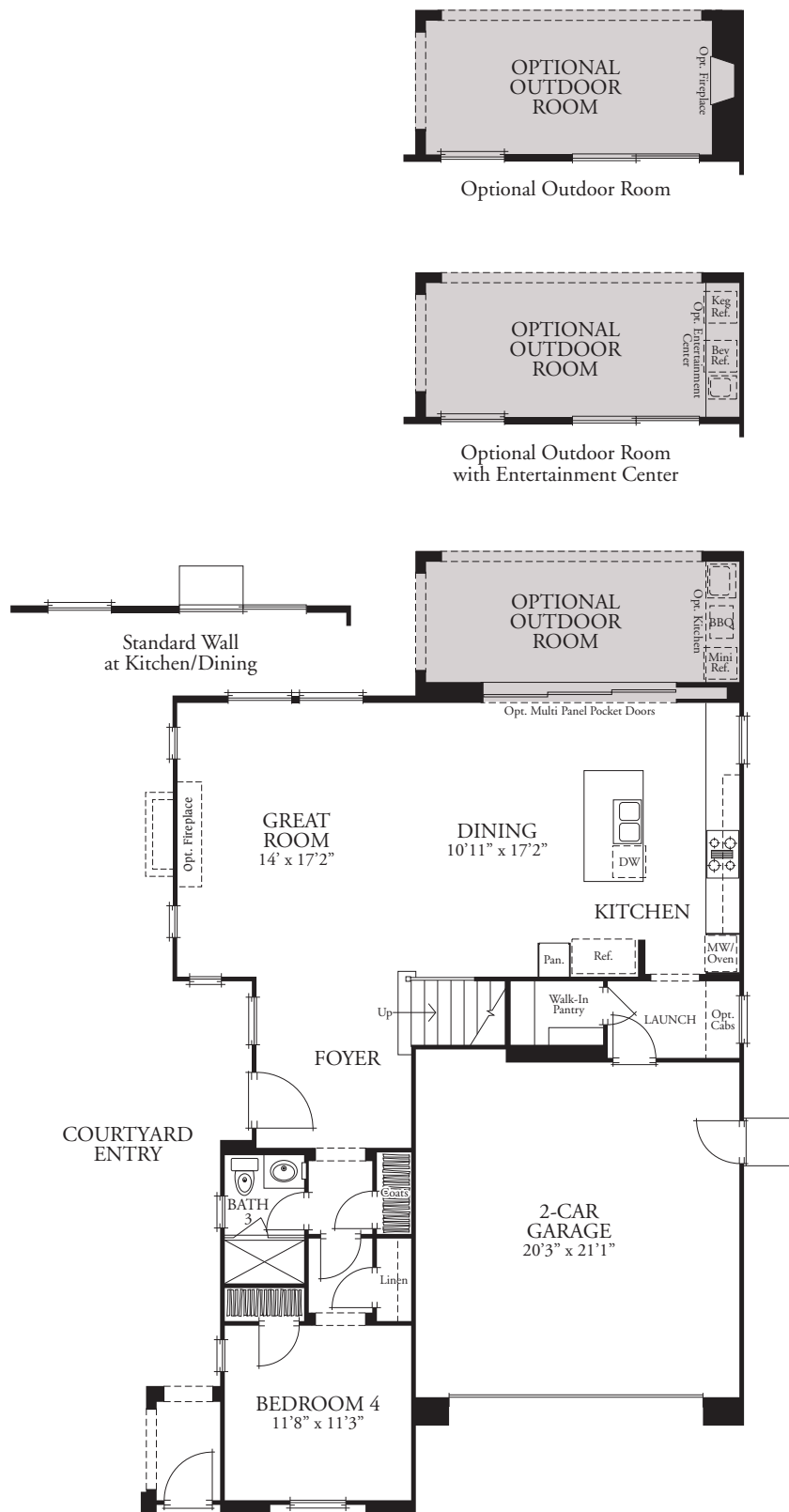
RESIDENCE 1AR
Santa Barbara
(As Modeled)



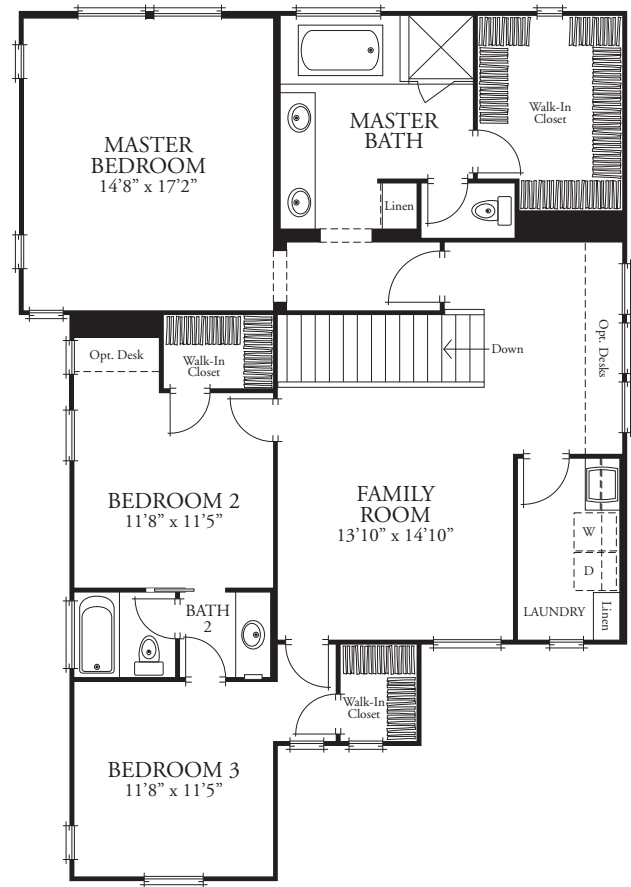
RESIDENCE 1BR
American Classic



RESIDENCE 1CR
Cottage



FIRST
floor



SECOND
floor

All square footage is approximate. Renderings are artist's conception. Stated dimensions are approximate estimates and not intended for space planning purposes. Windows, decks and doors vary by elevation. See Brookfield representative for details.



RESIDENCE 3

Approx. 3,008 – 3,032 Sq. Ft. • 4 Bedrooms • 4.5 Bathrooms
Volume Ceiling at Foyer • Formal Dining Room
Expansive Great Room • First Floor Bedroom Suite • Launch
Upstairs Family Room • 2-Car Garage plus Storage
Optional Bedroom 5 at Family Room • Optional Outdoor Room
with Kitchen, Entertainment Center or Fireplace



RESIDENCE 3A
Santa Barbara



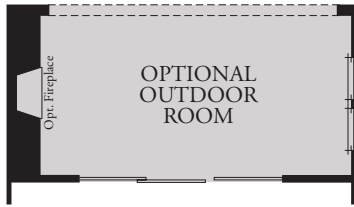
RESIDENCE 3B
American Classic



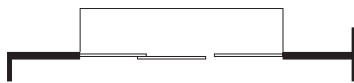
RESIDENCE 3C
Cottage
(As Modeled)



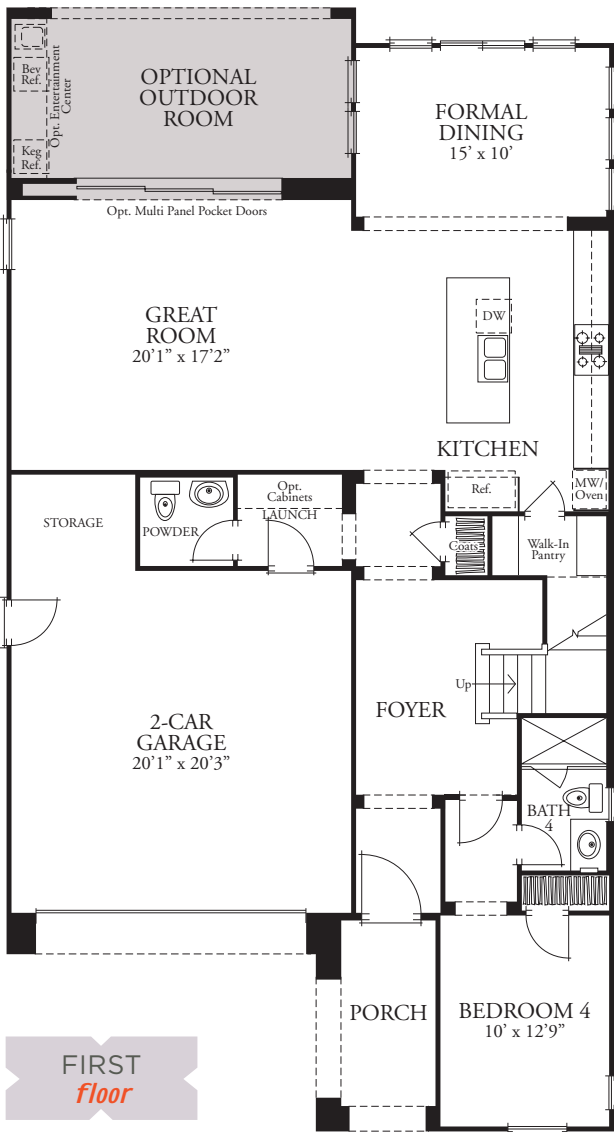
Optional Outdoor Room with Kitchen



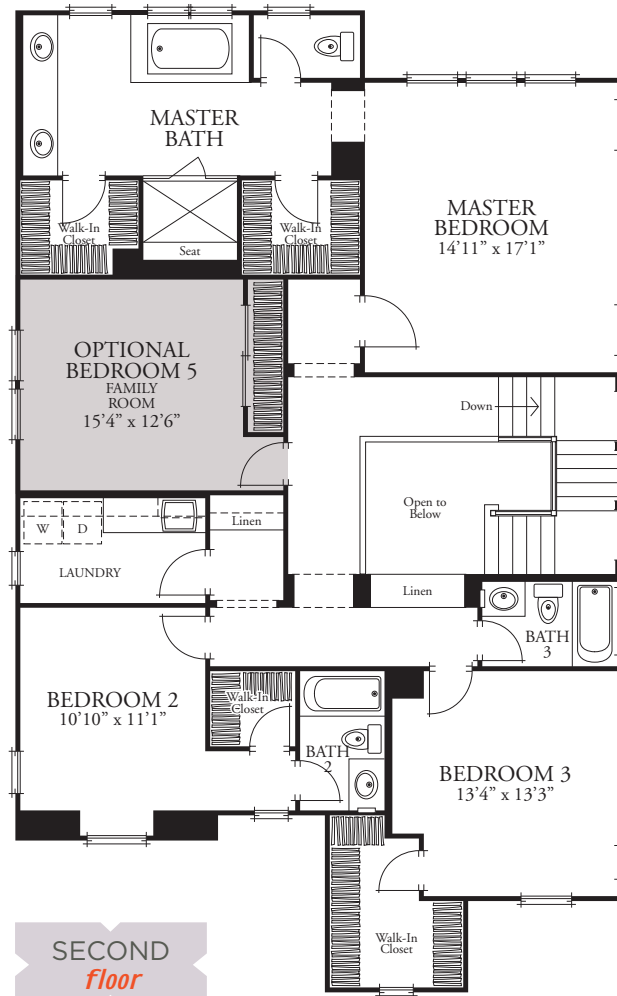
Optional Outdoor Room with Fireplace



Standard Wall



FIRST floor



SECOND floor



Standard Family Room



2R

RESIDENCE 2R

Approx. 2,807 – 2,839 Sq. Ft. • 4 Bedrooms • 3 Bathrooms
First Floor Bedroom • Expansive Great Room • Launch • 2-Car Garage
Upstairs Family Room • Optional Bedroom 5 at Family Room
Optional Bedroom 5 with Bath 4 at Family Room • Optional Outdoor Room with
Kitchen, Entertainment Center or Fireplace



RESIDENCE 2AR
Monterey



RESIDENCE 2BR
American Classic
(As Modeled)



RESIDENCE 2CR
Cottage



FEATURES LIST

EXCEPTIONAL EXTERIORS

- An impressive street scene comprised of beautifully detailed Monterey, Santa Barbara, American Classic and Cottage inspired architecture
- Wrought iron, brick veneer and custom exterior light fixtures (varies by elevation)
- Elegant 8' entry doors in stained finish with Venetian bronze door hardware
- 6" pre-finished seamless aluminum rain gutters with 3" round downspouts at select locations
- Rear yard gas stub for barbeque grill
- Weather-proofed exterior electrical outlets
- Water-proofed front exterior decks (varies by plan type and elevation)
- Carriage-style steel insulated sectional roll up garage doors
- Optional covered outdoor room to expand your indoor/outdoor living experience

LUXURIOUS LIVING SPACES

- 13" x 13" ceramic tile flooring in kitchen, foyer, launch, pantry and master bathroom
- Elegant staircases with painted balusters and handrails
- Decorative door casings and baseboards
- Design-enhancing bullnose wall corners
- Two-panel interior doors with Kwikset® Vendani levers in oil-rubbed bronze finish
- Stylish master bathrooms feature E-Stone countertops with 6" splash, luxurious soaking tubs with hand-set ceramic tile surround, walk-in showers with built-in seat and ¼" frameless enclosure, elongated toilets and dual china sinks with Delta® Ashlyn polished chrome faucets
- Secondary bathrooms feature solid surface countertops with 4" splash, hand-set ceramic tile surround at tub/shower and/or shower and convenient medicine cabinet for extra storage
- Laundry room features solid surface countertops with 4" splash, white sink with single handle pull-out faucet, upper and lower cabinetry, drip rod and gas dryer hook ups

CHEF-CALIBER KITCHENS

- KitchenAid® stainless steel appliances include:
 - 36" 5-burner cooktop with 400 CFM hood
 - 30" built-in single oven with 36" convertible under cabinet hood
 - Multi-cycle dishwasher
- Built-in microwave with 9 quick-touch cycles and 3 sensor cycles
- White, satin-finished shaker-style cabinetry with under cabinet lighting, fully concealed hinges, adjustable shelves and brushed chrome knobs
- Convenient trash & recycling cabinet with two bins
- Granite countertops with 6" backsplash and full backsplash behind cooktop available in two colors: New Caledonia and Baltic Brown
- Kohler® Vault stainless steel single-basin sink with single handle pull-out chrome Delta® Trinsic faucet and food waste disposal with convenience button
- Spacious walk-in pantry with shelving

TECHNOLOGY & ENERGY EFFICIENCY

- Title 24 compliant LED recessed lighting throughout includes manual switch or occupancy sensors
- Technology pre-wiring with Category 5e data wire to allow for phone lines and high-speed data connection in kitchen, launch, upstairs family room and master bedroom
- USB outlets in kitchen and master bedroom
- Low-E dual glazed vinyl windows and sliding glass doors that provide solar control and visible light transmittance, resulting in utility cost savings with increased efficiency
- Multi-zoned gas forced-air heating and central air conditioning with programmable wireless thermostat creates more balance and energy conscious consumption
- High-performance WaterSense® faucets, low-flow toilets and showerheads conserve water
- Liftmaster® garage door opener with (2) three-button transmitters and convenient keyless entry pad
- Modern tankless water heaters with direct vent
- Radiant barrier at roof consists of a highly reflective material that reflects heat rather than absorbing, thereby creating a more energy efficient home

PERSONALIZATION

With the guidance of the Brookfield Studio design professionals, you may choose to personalize your new home at Huntley with a host of optional upgrade selections. Opportunities include flooring, countertops, cabinetry, appliances, finish carpentry, electrical, sound & technology, staircase upgrades and many more to make your home uniquely yours.



LA VITA AT ORCHARD HILLS



LA CRESTA AT WOODBURY



DESCANSO AT DEL SUR

CREATING THE BEST PLACES TO CALL HOME.

Brookfield Residential Los Angeles is a premier lifestyle provider comprised of a dedicated, knowledgeable team of professionals with the passion and experience to craft exceptional new homes, neighborhoods and communities. From the goals of first time buyers to the prestige of luxury homes, we are proud to offer opportunities that embrace a diversity of aspirations. Respected as an award-winning innovator, we are recognized for delivering consistent quality, design details and an outstanding customer experience.

Brookfield Residential Properties Inc. is a leading North American land developer and homebuilder. We entitle and develop land to create master-planned communities and build and sell lots to third-party builders, as well as to our own homebuilding division. We also participate in select, strategic real estate opportunities, including infill projects, mixed use developments, and joint ventures. For more information, please visit BrookfieldResidential.com.

LEARN MORE AT
BROOKFIELDSOCAL.COM

LOS ANGELES • SAN DIEGO • SACRAMENTO • SAN FRANCISCO
PHOENIX • DENVER • AUSTIN • WASHINGTON DC
CALGARY • EDMONTON • TORONTO



CAMELLIA AT ROSEDALE

Brookfield
Residential



HUNTLEY

AT GREENWOOD

26 LANCEA PLACE • TUSTIN, CA 92782

800-599-3906

BrookfieldSoCal.com



Driving Directions: To visit Huntley from the 405 Freeway, exit Jamboree and go North. Take a right on Warner Ave., right on Valencia S. Loop Rd., right on Victory Rd. and follow the signs to the model homes. From the 5 Freeway, exit Jamboree and go South. Take the Warner Ave. exit and make a right. Make a right on Valencia S. Loop Rd., right on Victory Rd. and follow the signs to the model homes.